



Breakout Sessions: County-Level SDOH Metrics with MVC Data



Support for MVC is provided by Blue Cross Blue Shield of Michigan and Blue Care Network as part of the BCBSM Value Partnerships program. Although Blue Cross Blue Shield of Michigan and MVC work collaboratively, the opinions, beliefs and viewpoints expressed by the author do not necessarily reflect the opinions, beliefs and viewpoints of BCBSM or any of its employees.

Agenda

- Welcome
- County-Level SDOH Metrics & MVC Data
- MVC Unblinded Data
- Group Discussion

Health starts in our homes, schools, and communities.

Framing the Discussion

Live



Learn



Work



Play



Goals for our discussion include:

- Engage in collaborative learning about how sites across the MVC network are helping to support patients
- Explore how MVC could potentially support hospital & PO members in these efforts

BREAKOUT GROUP 2

Who is in the room?

Organization	Attendees
Ascension Borgess	Linda Mader
BCBSM	Emily Santer
BMC2	Annemarie Forrest
Bronson Healthcare	Rita Cox
Corewell Health South	Deborah Wolf
Corewell Health West	Ryan Hampton, Stephanie Laird,
HBOM	Larrea Young
Hillsdale Hospital	John Robertson
Holland Hospital	Shannon Faber, Ronnie Richards, Jennifer de Boer
McLaren Greater Lansing	Sasha Michalek
MSHIELD	Carol Gray
MSU Health Care	Marissa Herrera, Lauren Kerrick

Organization	Attendees
Oaklawn Hospital	Irene Johnston, Cody Zeithammel, Amy Brown
Sparrow Health System	Liz Gladston, Chaney Manarin, Anna Melville, Christopher Stimson, Eric Walters
Sparrow Hospital	Lisa Powell, Craig Speer, Alex Thompson
Sparrow Specialty Hospital	Marti Samsel
Trinity Health Alliance of MI	Belinda Dokic, Mara Duvall
Trinity Health Grand Haven	Heather Ruffin, Sarah Courtney
UM Health – West	Christi DeYoung, Thomas Pierce

American Community Survey

Social Determinants of Health Database

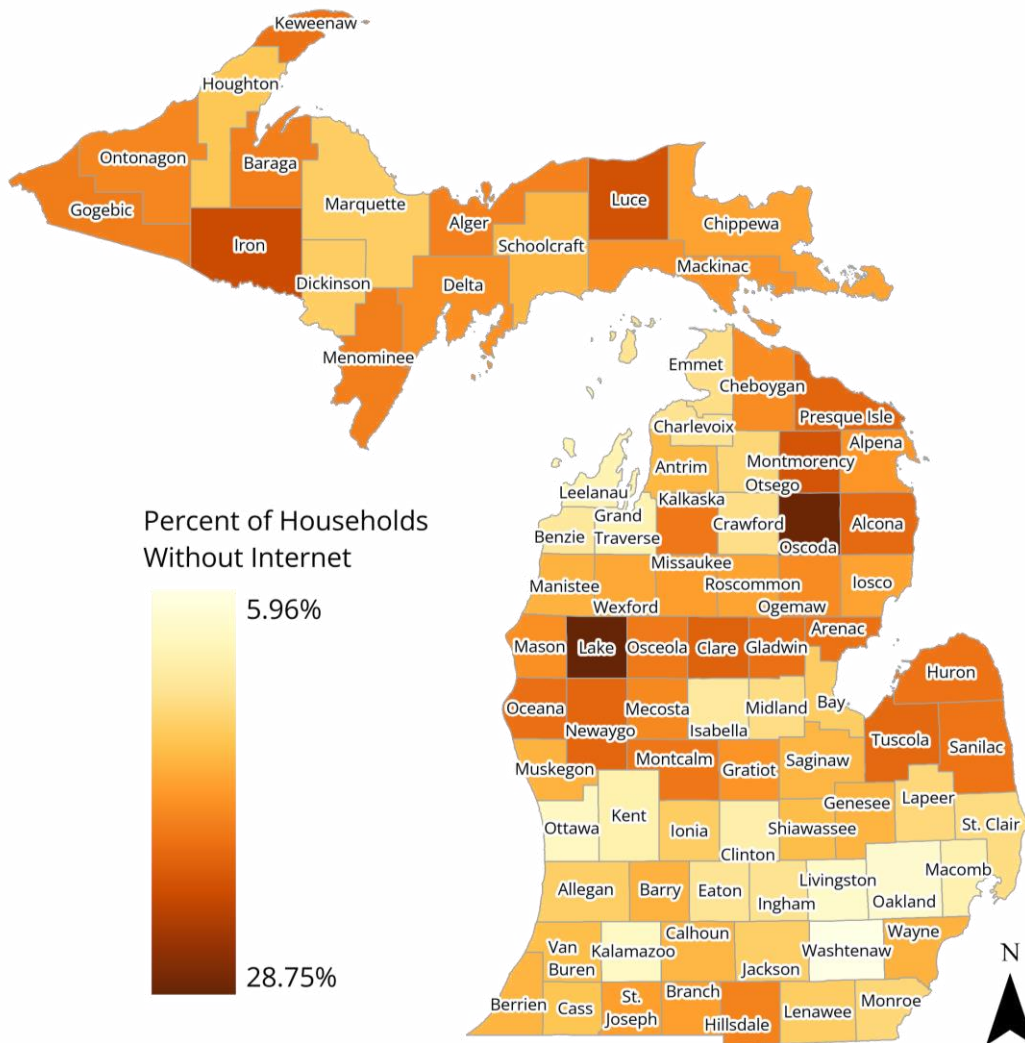
Metric	Group 1	Group 2	Group 3	All Counties
Average percent of households without internet at home	17.6%	13.2%	12.4%	15.9%
Average percent of households without a computing device	12.6%	9.3%	8.8%	11.4%
Average percent of housing units without a vehicle available	6.5%	5.9%	6.5%	6.4%
Average percent of households with public assisted income or food stamps/SNAP	13.3%	11.3%	12.4%	12.8%

Social Determinants of Health data were obtained from the American Community Survey, 2020 5-year estimates. Social Determinants of Health Database. Content last reviewed June 2023. Agency for Healthcare Research and Quality, Rockville, MD. <https://www.ahrq.gov/sdoh/data-analytics/sdoh-data.html>

Home Internet Access

ACS estimates the county percent of households without internet range from **5.96% - 28.75%**.

Home internet access is not universal and may impact patient access to remote care and scheduling services.



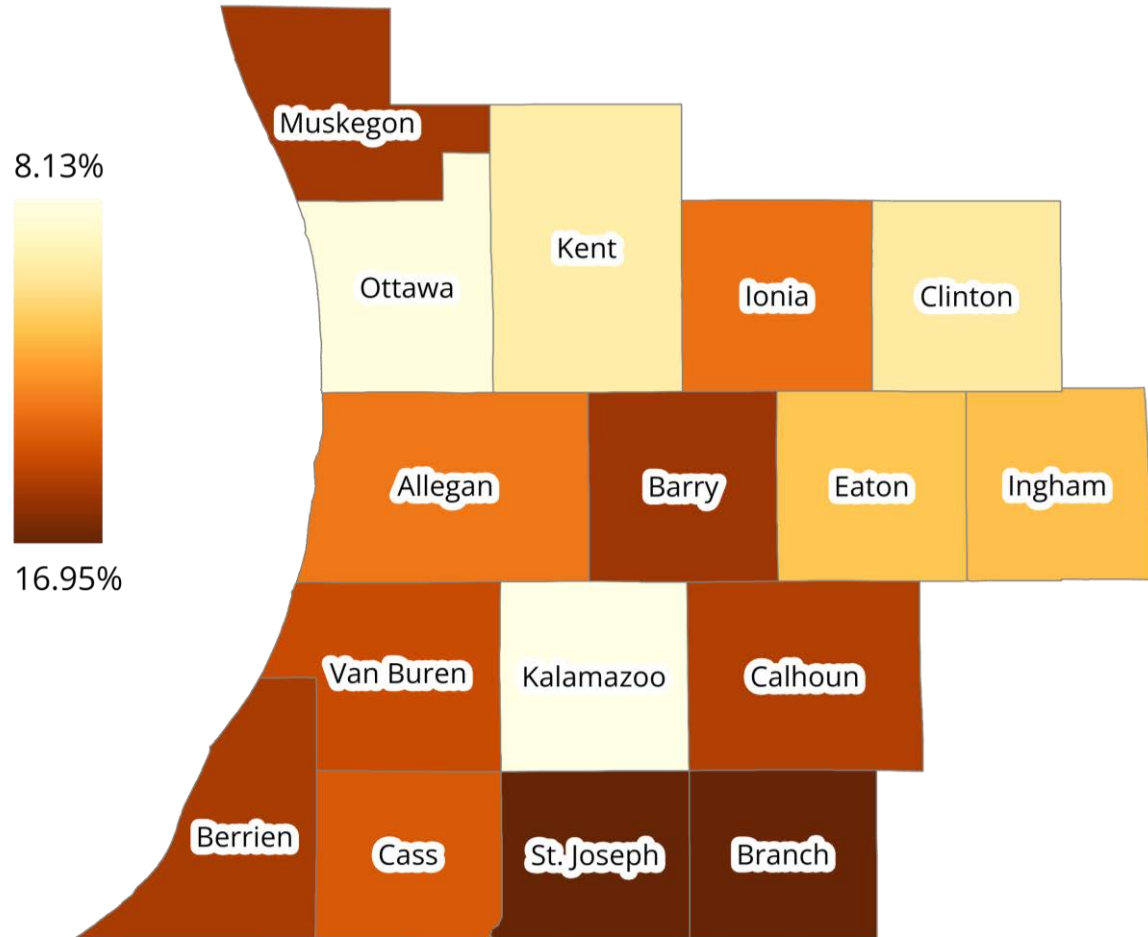
Group 2 Counties

Percent of Households Without Internet Access

All Counties Average: 15.9%

Group 2 Average: 13.2%

Group 2 Range: 8.13%-16.95%



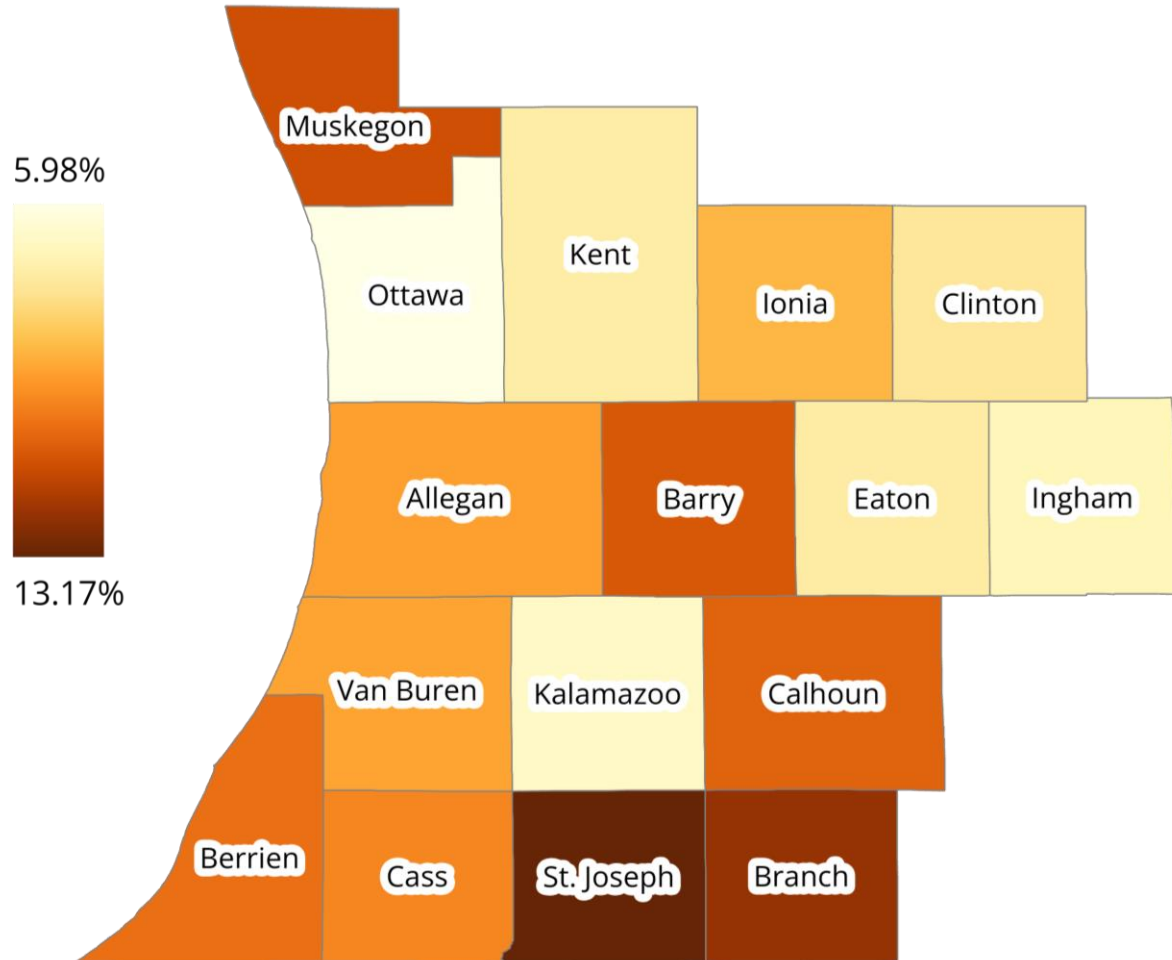
Group 2 Counties

Percent of Households With No Computing Device

All Counties Average: 11.4%

Group 2 Average: 9.3%

Group 2 Range: 5.98%-13.17%



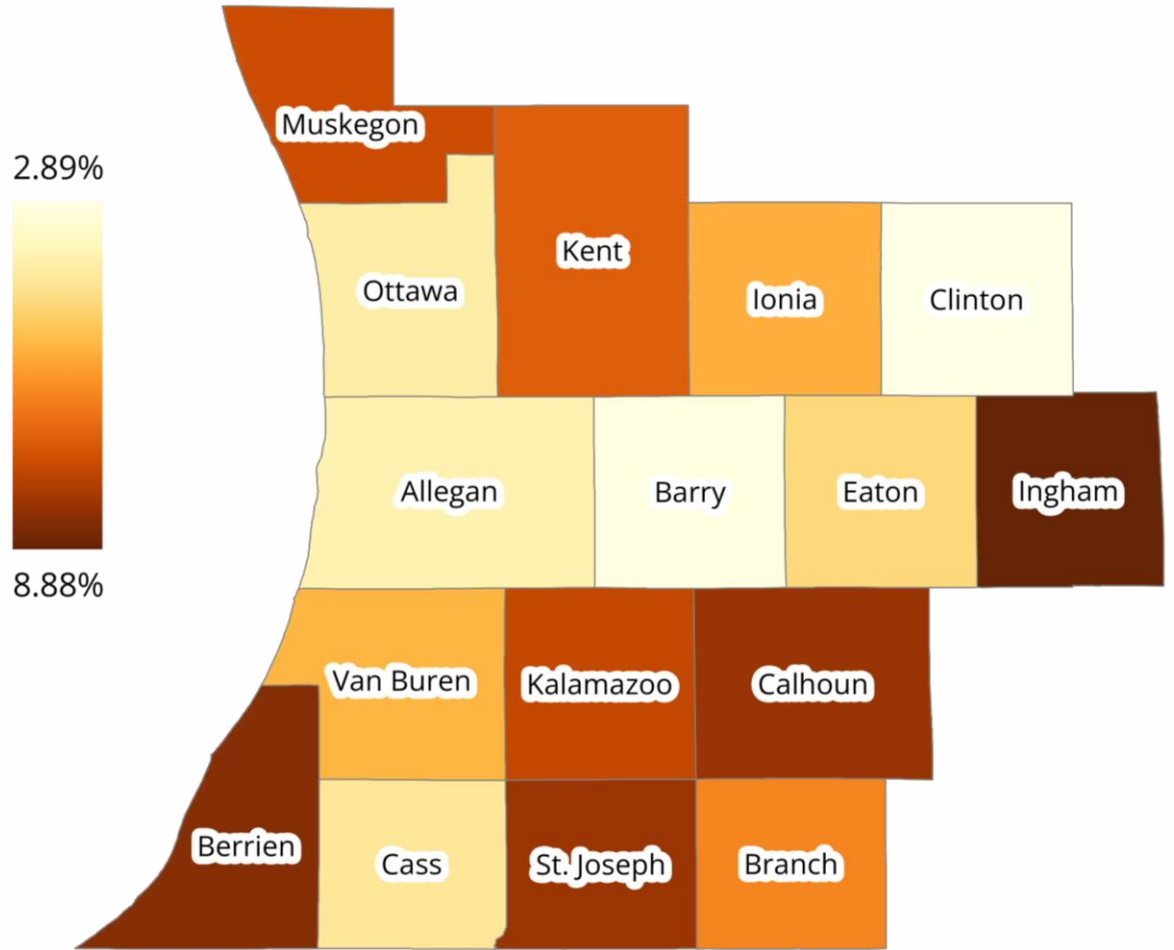
Group 2 Counties

Percent of Housing Units With No Vehicle

All Counties Average: 6.4%

Group 2 Average: 5.9%

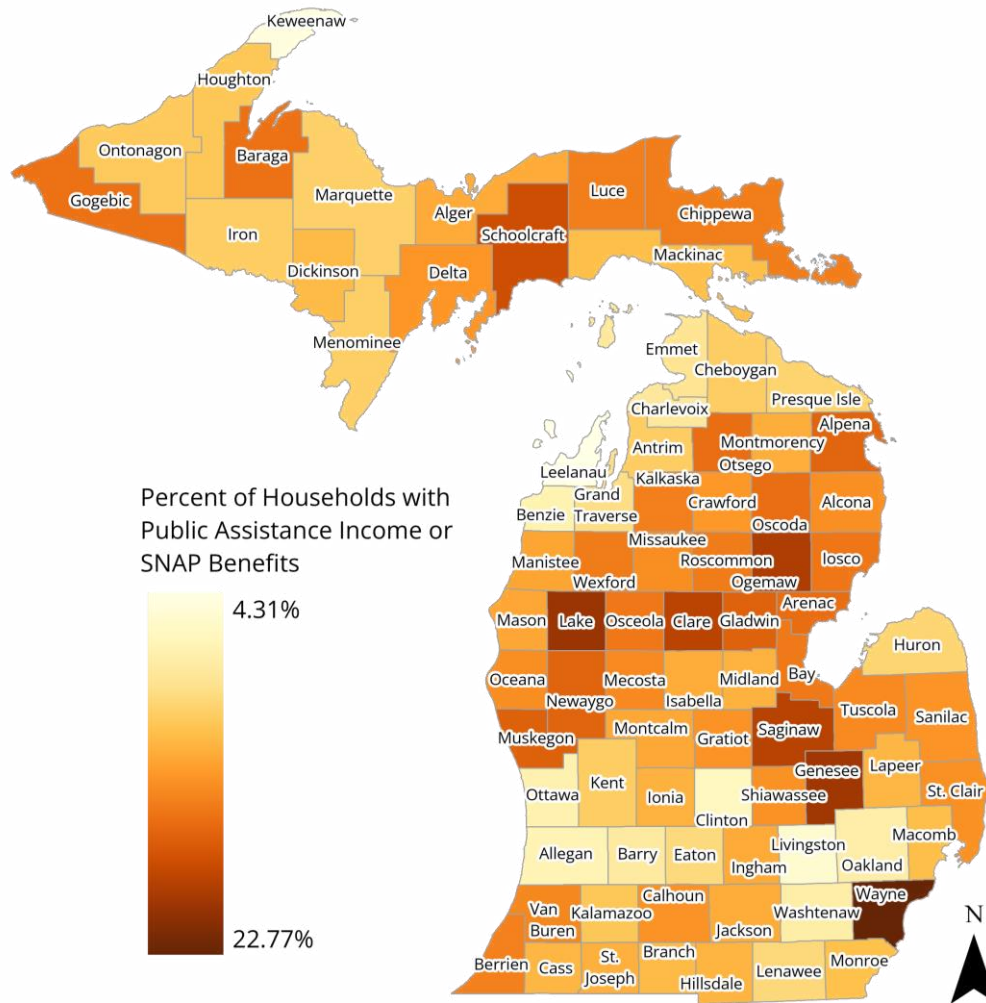
Group 2 Range: 2.89%-8.88%



Public Assistance

ACS estimates the county percent of households with public assistance/ SNAP benefits range from 4.31% - 22.77%.

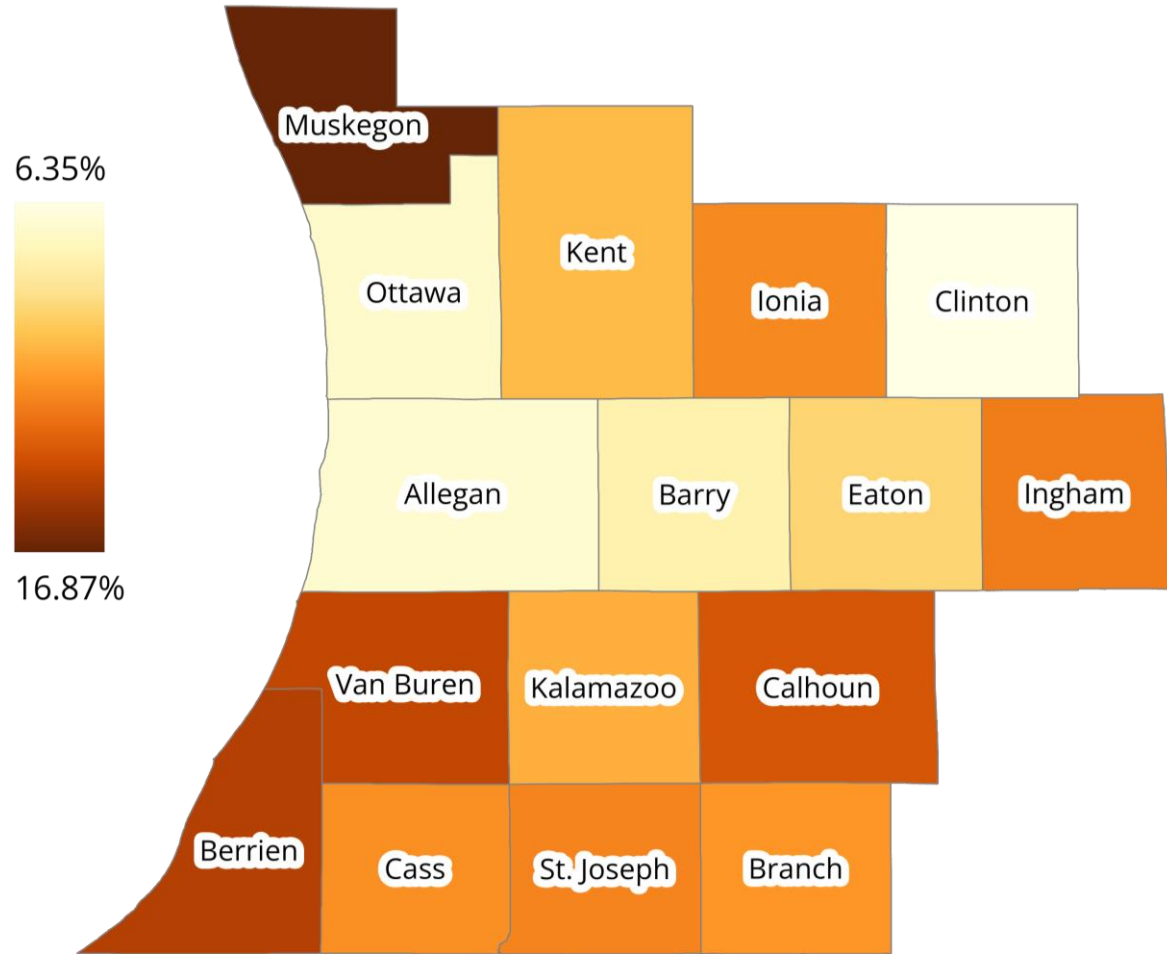
Public assistance income and SNAP benefits serve as proxies for financial security.



Group 2 Counties

Percent of Households Receiving Public Assistance Income or SNAP Benefits

All Counties Average: 12.8%
Group 2 Average: 11.3%
Group 2 Range: 6.35%-16.87%



A photograph of a hospital room, including a hospital bed, an IV stand, and a window with curtains, all overlaid with a semi-transparent blue filter. The text is positioned on the left side of the image.

Group 2 Unblinded Data: 30-Day Readmissions

Metric Definition

30-Day Readmission Rate

- 30-day readmission rate is defined as having ***at least one inpatient claim within 30 days after the index discharge***
- Inpatient claims are identified through the presence of DRGs on claims submitted after the index discharge

Analytic Cohort

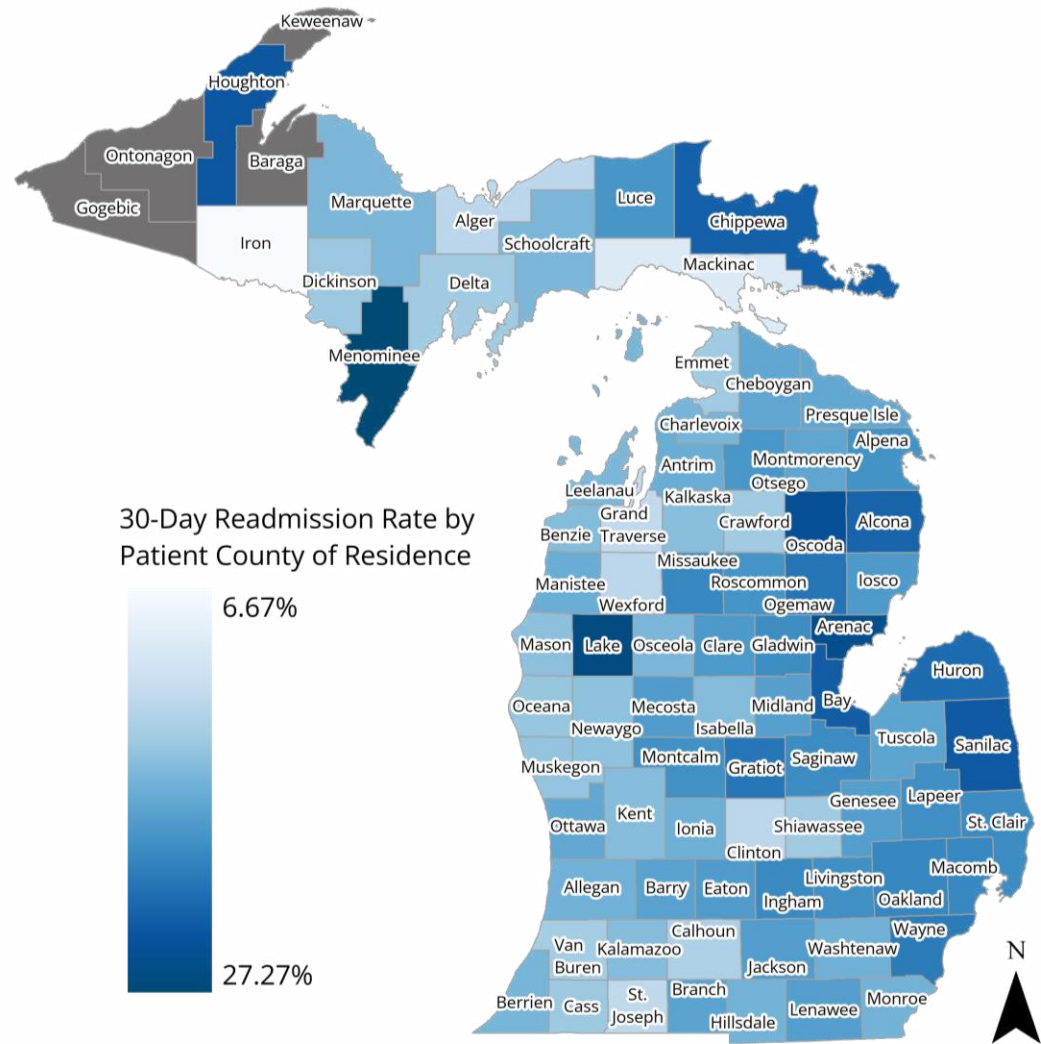
Denominator for unblinded data session

- Patient episodes represented:
 - 30-day episodes among patients hospitalized for congestive heart failure (CHF)
 - Index events 7/1/2019-6/30/22
- Payers Represented in **Hospital Data**:
 - BCN: HMO and Medicare Advantage (MA)
 - BCBSM: PPO Commercial and MA
 - Medicare
- Payers Represented in **PO Data**:
 - BCBSM: PPO Commercial and MA
 - Medicare
- Exclusions:
 - Episodes with COVID-19 in primary position of any claim
 - Hospitals with <11 episodes in timeframe
 - Counties with <11 episodes in timeframe

Readmission After Index CHF Hospitalization

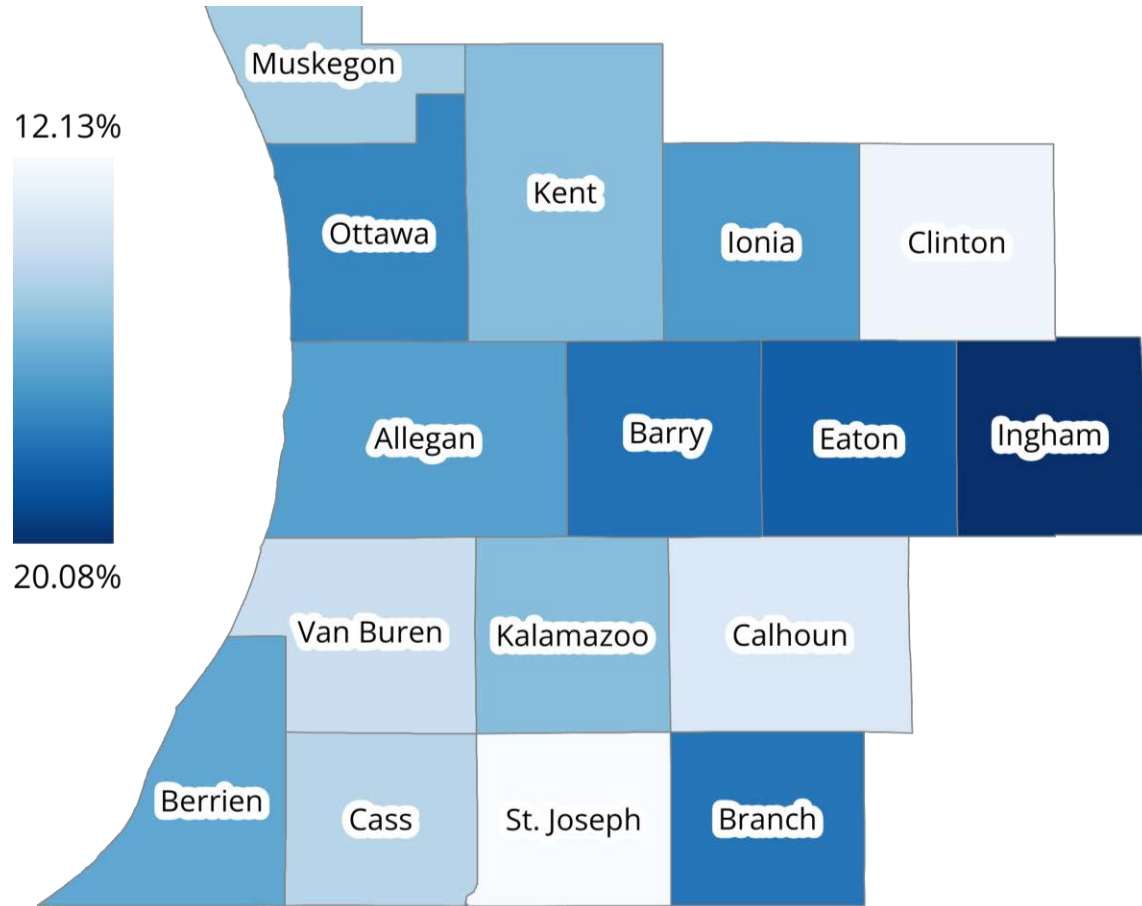
Statewide Benchmarking

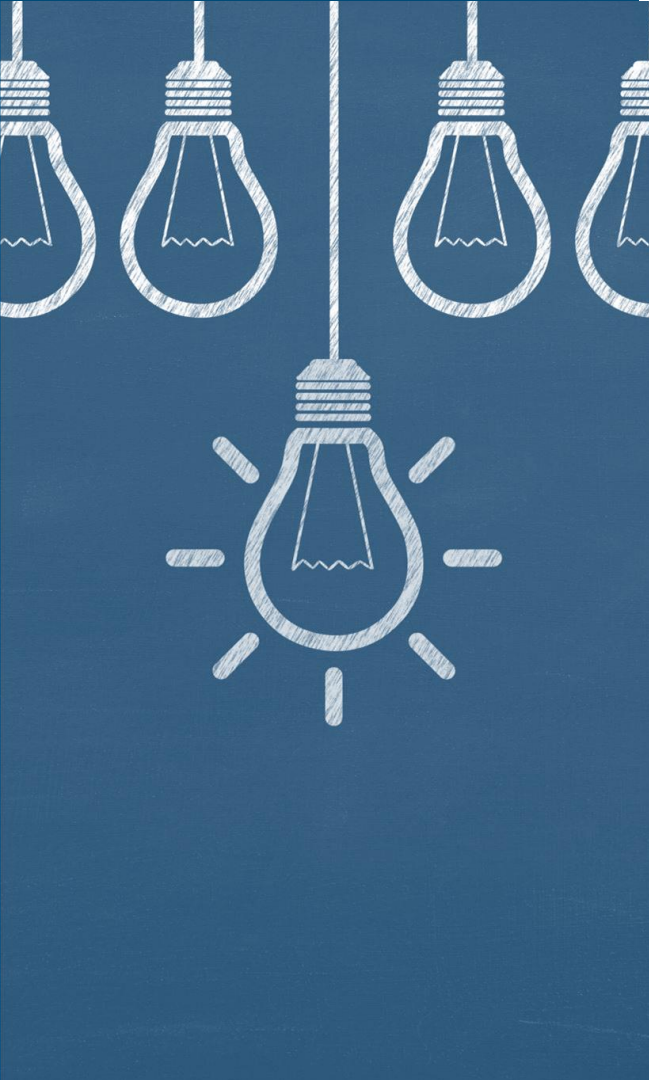
Counties on the west side of the lower peninsula generally have lower readmission rates among residents



Group 2 Counties

**30-Day Readmission
Rates Among CHF
Patients with Index
Events between
7/1/2019-6/30/22**





Discussion

- What do you need to know about your patients to better support health equity efforts at your site?
- What projects are you working on, or what areas would you like to be working on, in the health equity space?
- What challenges or barriers are you facing in ensuring your patients are able to achieve their highest level of health?