



*Helping improve the  
health of Michigan  
through sustainable,  
high-value healthcare*



# MVC Semi-Annual Meeting October 28, 2022

---

# MVC Updates

---

- Welcome new MVC member
  - Bronson Lakeview Paw Paw
- New MVC team members:



**Erin Conklin**  
Associate Program Manager



**Usha Nuliyalu**  
Senior Data Analyst



# MVC Updates



Qualified Entity reports on registry



Distressed Community Index added to push reports



New and refreshed push reports: COPD, emergency department and post-acute care utilization, hospital hysterectomy, BCBSM preoperative testing, chronic disease management follow-up



New conditions: small bowel obstruction, nephrectomy, and endocarditis



P4P mid-year scores for PY22 shared

# MVC's Value Coalition Campaign to Reduce Unnecessary Preoperative Testing

*in collaboration with*



**LABS AND TESTS DON'T IMPROVE OUTCOMES FOR LOW-RISK SURGERIES IN HEALTHY PATIENTS**

*Yet 57% of these patients still undergo pre-operative testing.*

Labs and tests that aren't indicated may cause harm through:

- Cascade Effect**  
Unindicated labs and tests may yield slightly abnormal but clinically insignificant results, leading to yet more unnecessary tests or procedures.
- Delayed Medical Treatment**  
False alarms can delay surgical procedures.
- Costly Waste**  
Lab tests may add to the financial burden on the patient.



Stand with the majority of clinicians and #LoseThePreopLabs

For more information, visit [www.michiganvalue.org](http://www.michiganvalue.org)

**MVC's Value Coalition  
Campaign to equitably  
increase cardiac rehabilitation  
participation for all eligible  
individuals in Michigan**



*a collaboration between*



**CARDIAC REHAB  
BEST PRACTICES  
TOOLKIT**

**STRATEGIES TO IMPROVE  
ENROLLMENT AND ATTENDANCE**



**FOLLOW THE QR CODE TO ACCESS THE  
FULL TOOLKIT ON YOUR SMARTPHONE**



# MVC Component of the BCBSM P4P Program

Program Updates

# Program Year 2022

---

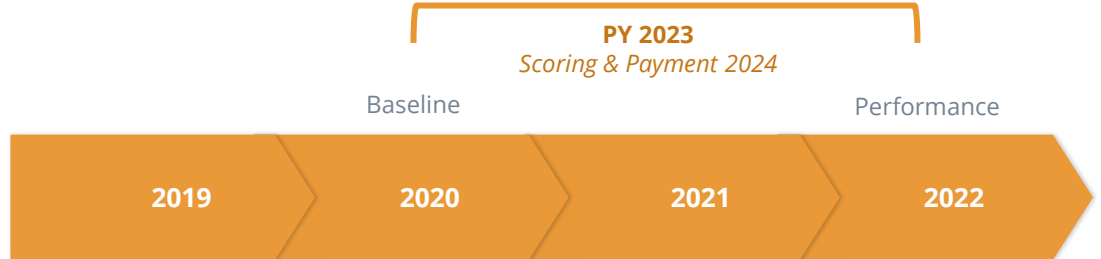
- Conditions selected July 2021
- Mid-Year Reports distributed in August 2022
- **Bonus point questionnaires due November 1, 2022**
- Final scores will be shared in Quarter 1 of 2023



# Program Year 2023

---

- Conditions selected July 2021
- Mid-Year Reports to be distributed in summer 2023
- Bonus point questionnaires due November 1, 2023
- Final scores will be shared in Quarter 1 of 2024



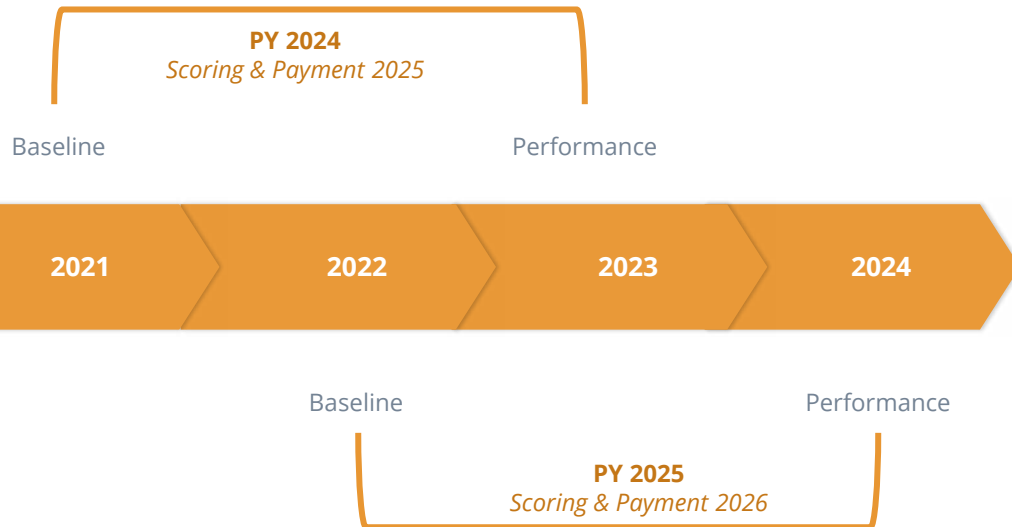


# PY 2024 & 2025

---

## New Cycle Changes

# Timeline



# Program Structure

## Current (PY22-23)

Maximum Score = 10 Points

Episode Spending  
(10 points)

Questionnaire  
(2 bonus points)

## Future (PY24-25)

Maximum Score = 10 Points

Episode  
Payment  
(4 points)

Value  
Metrics  
(4 points)

Engagement  
Activities  
(2 points)

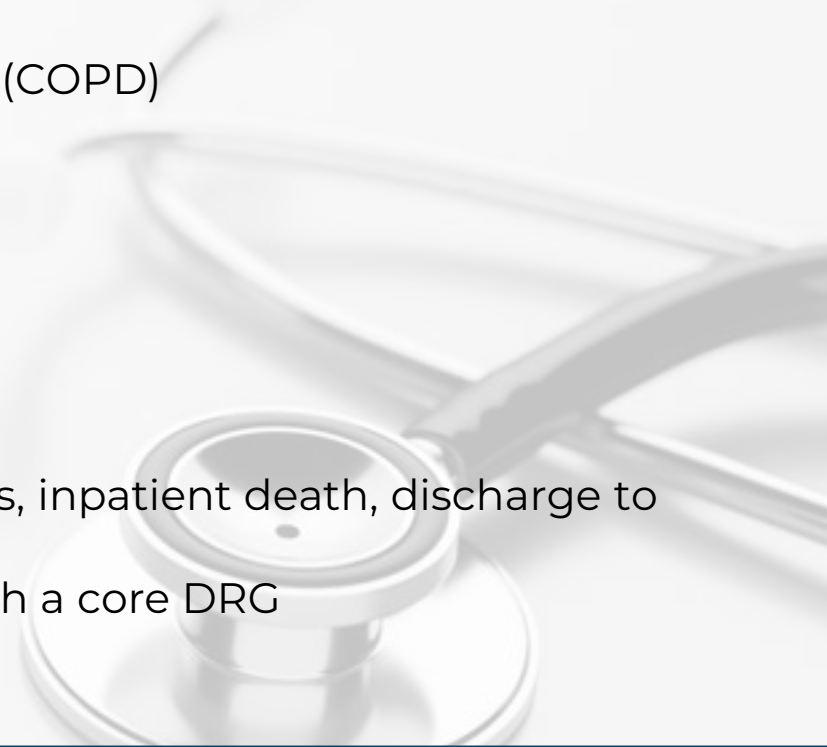
# 30-Day Episode Payment Component

## **Condition Selection Options:**

- Chronic obstructive pulmonary disease (COPD)
- Colectomy (non-cancer)
- Congestive heart failure (CHF)
- Coronary artery bypass graft (CABG)
- Joint replacement (hip and knee)
- Pneumonia

## **Modified P4P Eligibility:**

- Existing exclusions will remain (transfers, inpatient death, discharge to hospice)
- Limit P4P-eligible episodes to those with a core DRG

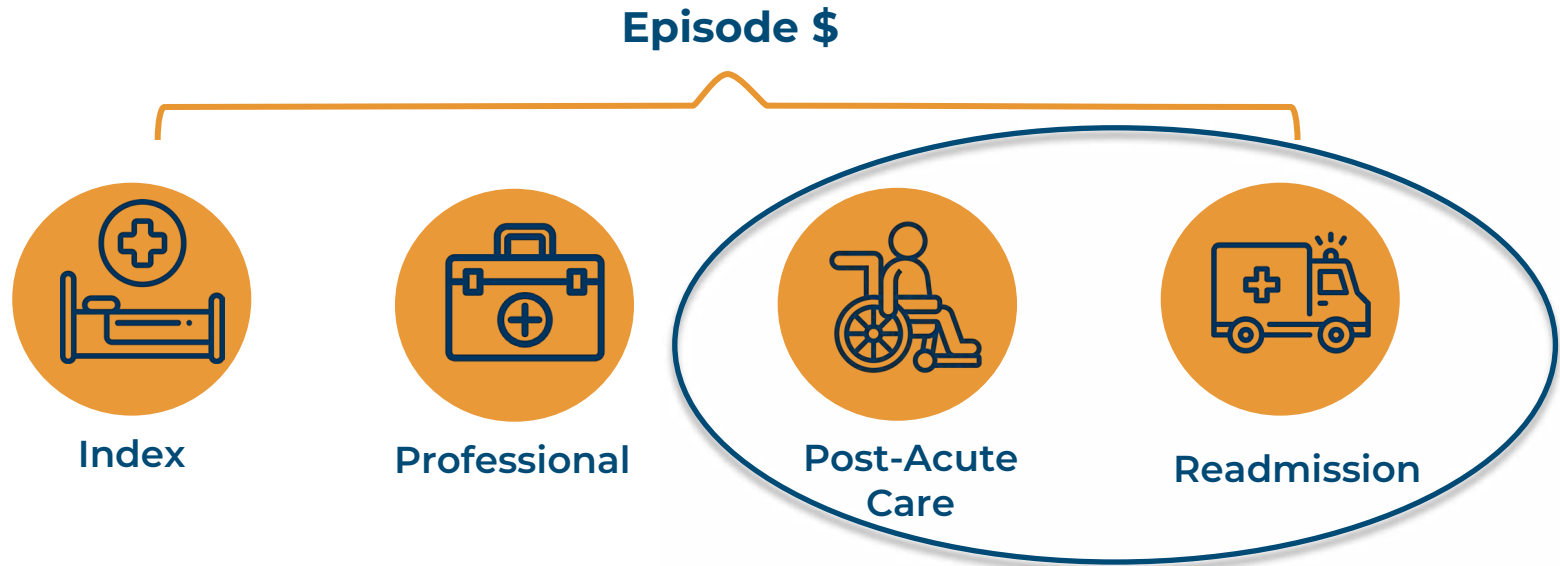


# Episode Metric Scoring

| <b>NEW: Metric Options</b>  | <b>Maximum Score</b>                                 | <b>Scoring Methodology</b>                    |
|---|--|---|
| Choose 1 of 6   | 4  | Z-score                                       |
| <b>Scoring Logic</b>  | <b>Improvement Comparison</b>                        | <b>Achievement Comparison</b>                 |
| Still award greater of the two, either Improvement or Achievement | Improvement based on hospital's own past performance | Achievement based on comparison to MVC cohort |

# Value Metrics


- Zero in on specific parts of an episode under specific contexts
- Evidence-based, actionable items that improve patient care and are cost effective



# Value Metric Options

**Reward *high*  
rates of *high*-  
value services**

**Reward *low*  
rates of *low*-  
value services**

- 
- Follow-up rates after COPD hospitalization
  - Follow-up rates after pneumonia hospitalization
  - Follow-up rates after CHF hospitalization
  - Cardiac rehab utilization after PCI
  - Cardiac rehab utilization after CABG
  
  - Pre-operative testing rates for low-risk surgeries
  - Risk-adjusted readmissions after sepsis

**Hospitals choose 1 Value Metric to be scored on from a menu of 7 options.**

# Value Metric Scoring

| <b>NEW: Metric Options</b>  | <b>Maximum Score</b>                                 | <b>Scoring Methodology</b>                    |
|---|--|---|
| Choose 1 of 7   | 4  | Z-score                                       |
| <b>Scoring Logic</b>  | <b>Improvement Comparison</b>                        | <b>Achievement Comparison</b>                 |
| Still award greater of the two, either Improvement or Achievement | Improvement based on hospital's own past performance | Achievement based on comparison to MVC cohort |



# P4P Engagement Point System

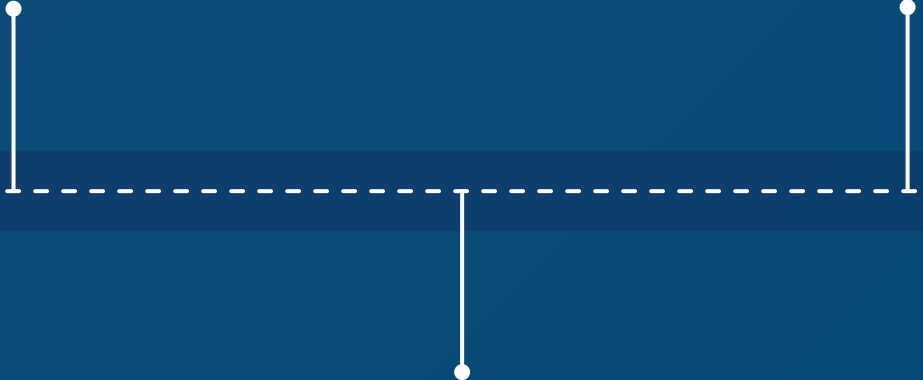
To earn any engagement points, hospitals select at least **one** activity from **each** column.

| Attendance                                    |             | Participation  |             |
|---|-------------|--|-------------|
| Description                                   | Point Value | Description  | Point Value |
| Attend both MVC Semi-Annual Meetings          | 0.25        | Present at an MVC Semi-Annual Meeting                    | 0.5         |
| Attend 5+ MVC Workgroups                      | 0.25        | Present at an MVC Workgroup                              | 0.5         |
| Attend Regional Networking Event              | 0.25        | Host a Virtual or In-Person Site Visit                   | 0.5         |
| Submit a Request for a Custom Analytic Report | 0.25        | Participate in an MVC Case Study Related to a QI project | 0.5         |
| Other TBD                                     | 0.25        | Collaborate with MVC staff on an MVC Blog Post           | 0.5         |
| Other TBD                                     | 0.25        | Other TBD  | 0.5         |

# PY 24 & 25 Condition and Metric Selection

The technical document will be available in the next few weeks.

Selections are due two weeks after the reports are distributed.



Selection reports will be sent out in November. Webinars will be scheduled once the reports are distributed.

# Pharmacy Data

## Overview and Unblinded Data



# MVC Pharmacy Claims by Payer

## **BCBSM PPO**

- Claims for Commercial and Medicare Advantage
- Commercial Coverage 58%
- Medicare Advantage Coverage 27%

## **BCN**

- Claims for Commercial and Medicare Advantage
- Commercial Coverage 83%
- Medicare Advantage Coverage 70%

## **Medicare FFS**

- Coming Soon

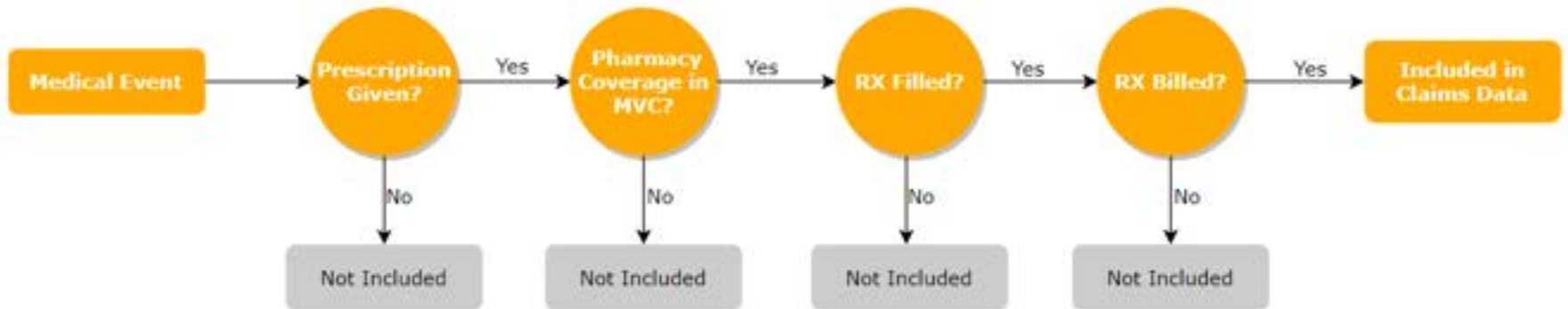
# What is Pharmacy Claims Data?

---

**A record of pharmacy claims that were billed to payers, including information on:**

- Prescription name
- National Drug Code (NDC)
- Prescribed date
- Filled date
- Prescriber NPI
- Pharmacy name and location
- Quantity
- Days supplied
- Paid amount
- Member co-insurance and co-payment

# Included In MVC Pharmacy Claims



# Limitations

---

- Only includes filled prescriptions that the provider billed
- Doesn't include pharmacy claims for medications given in the inpatient setting
- Thousands of different NDCs per drug class
- Many different names for a medication
- Not always attributable directly to facilities
- Limited coverage for certain payers

# Recent & Current Prescription Work

---

- MCT2D: Profile of diabetic medications in Michigan
- HBOM: Smoking cessation treatment and medications
- MUSIC: Reduction in over-prescribing of opioids after prostatectomy
- MBSC: Reduction in payments for diabetic medications following bariatric surgery
- MBSC: Reduction in over-prescribing of opioids in bariatric surgery



# Upcoming Events

## Virtual Workgroups:



- Sepsis: November 9, 1 p.m.
- Chronic Disease Management  
November 17, 2 p.m.
- Diabetes: December 6, 11 a.m.
- Joint: December 14, 1 p.m.

**2023 schedule coming soon!**



## Save the Date: 2023 Collaborative-Wide Meetings

- May 19, 2023: Livonia
- October 20, 2023: Lansing



## P4P Due Dates:

- Questionnaires: November 1
- 2024-2025 Condition Selection:  
late November/early December